



UNIVERSITY OF CAMBRIDGE INTERNATIONAL EXAMINATIONS  
General Certificate of Education Ordinary Level

**GEOGRAPHY**

Paper 2

INSERT

**2217/22**

**October/November 2012**

**2 hours 15 minutes**

---

**READ THESE INSTRUCTIONS FIRST**

This Insert contains Photograph A for Question 3, Figs 8 and 9 and Tables 1 and 2 for Question 7, and Fig. 12 for Question 8.

The Insert is **not** required by the Examiner.

---

This document consists of **7** printed pages and **1** blank page.

DC (NF/JG) 50282/6  
© UCLES 2012



UNIVERSITY of CAMBRIDGE  
International Examinations

**[Turn over**

Photograph A for Question 3



Fig. 8 for Question 7  
Barometer reading

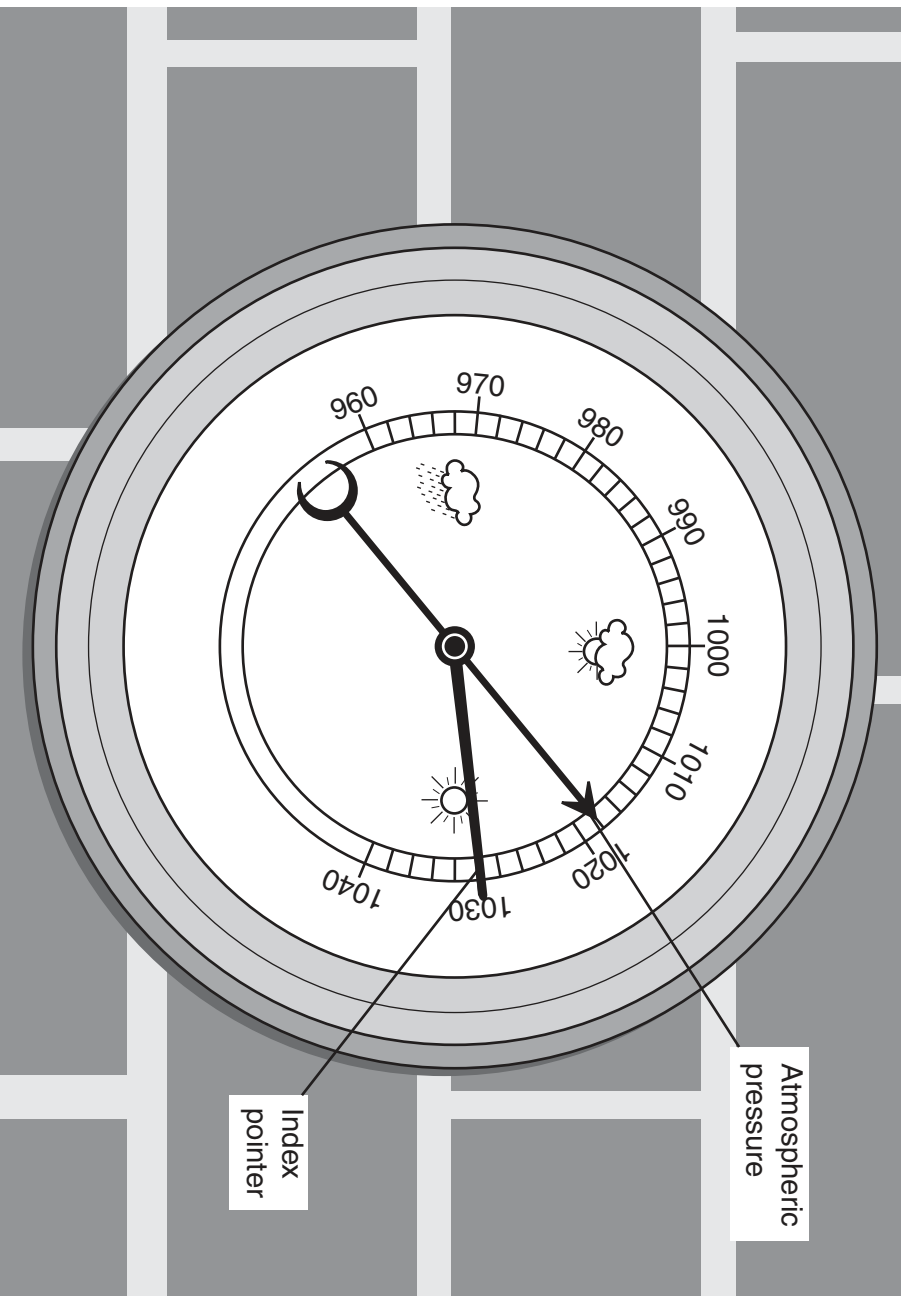
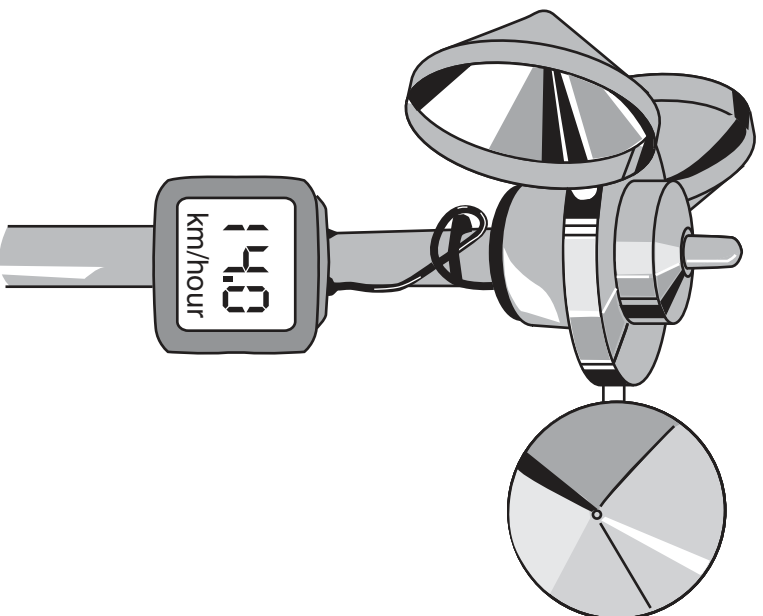


Fig. 9 for Question 7

Anemometer



**Table 1 for Question 7**

**Measurements at the two schools**

**Data for Manama, Bahrain**

Date in January	11	12	<b>13</b>	14	15	16	17	18	<b>19</b>	20
Atmospheric pressure (mb)	1018	1019	<b>1016</b>	1019	1016	1020	1016	1016	<b>1017</b>	1019
Wind speed (km per hr)	4	4	<b>12</b>	13	11	9	5	3	<b>7</b>	10

**Data for Jakarta, Indonesia**

Date in January	11	12	13	14	15	16	17	18	19	20
Atmospheric pressure (mb)	1012	1013	1013	1013	1012	1012	1012	1011	1010	1010
Wind speed (km per hr)	4	7	4	5	8	5	7	8	6	7

Table 2 for Question 7

Atmospheric pressure

Data for Manama, Bahrain

Date	11	12	13	14	15	16	17	18	19	20
Atmospheric pressure (mb) July	997	996	995	996	997	998	1000	<b>999</b>	998	998
Atmospheric pressure (mb) Jan	1018	1019	1016	1019	1016	1020	1016	<b>1016</b>	1017	1019

Data for Jakarta, Indonesia

Date	11	12	13	14	15	16	17	18	19	20
Atmospheric pressure (mb) July	1011	1012	1011	1011	1010	1010	1009	1009	1008	1009
Atmospheric pressure (mb) Jan	1012	1013	1013	1013	1012	1012	1012	1011	1010	1010

Fig. 12 for Question 8

Land use map of central area



